

13.4. Taxonomic index

Page numbers that hold taxa descriptions are put in bold.

A

<i>Abutilon theophrasti</i>	42
<i>Acrodiclidium</i>	17
<i>Agathophyllum</i>	34
<i>Agathophyllum aromaticum</i>	34
<i>Aiouea dubia</i>	3
<i>Aiouea laevis</i>	125
<i>Akodon serrensis</i>	72
<i>Alouatta fusca</i>	72
<i>Alouatta guariba</i>	87
<i>Anaueria brasiliensis</i>	32
<i>Aniba</i>	2
<i>Artibeus lituratus</i>	87
<i>Aspidostemon</i>	4, 14
<i>Aydendron</i>	17
<i>Aydendron floribundum</i>	3, 35, 59

B

<i>Beilschmieda linharensis</i>	119
<i>Beilschmiedia</i>	9, 14, 15, 27, 30, 31, 118
<i>Beilschmiedia angustifolia</i>	32
<i>Beilschmiedia costaricensis</i>	35
<i>Beilschmiedia emarginata</i>	3, 32
<i>Beilschmiedia linharensis</i>	32
<i>Beilschmiedia miersii</i>	2
<i>Beilschmiedia rigida</i>	32, 119
<i>Beilschmiedia zapoteoides</i>	35
<i>Bellota miersii</i>	2
<i>Brachyteles arachnoides</i>	72, 87
<i>Brassiodendron</i>	31
<i>Brassiodendron fragrans</i>	17

C

<i>Callicebus personatus</i>	87
Canellales.....	1
<i>Caryodaphne</i>	2, 34
<i>Caryodaphne browniana</i>	2
<i>Caryodaphne densiflora</i>	2
<i>Caryodaphne laevigata</i>	2, 34
<i>Cassytha</i>	15, 23
<i>Cebus apella</i>	72, 87
<i>Cinnamomum</i>	8, 9, 31

<i>Cryptocarya</i>	34
<i>Cryptocarya</i>	1, 2, 3, 4, 5, 6, 8, 9, 11, 12, 14, 15, 16, 17, 20, 21, 22, 23, 25, 27, 28, 30, 31, 32, 33, 34 , 35, 119, 125, 129, 130, 141
<i>Cryptocarya mandioccana</i>	72
<i>Cryptocarya</i> aff. <i>aschersoniana</i>	5, 9, 10
<i>Cryptocarya agathophylla</i>	34
<i>Cryptocarya alba</i>	2, 3, 27, 28
<i>Cryptocarya angustifolia</i>	27
<i>Cryptocarya aromatica</i>	3, 34
<i>Cryptocarya aschersoniana</i>	3, 4, 5, 6, 8, 9, 14, 16, 17, 20, 21, 26, 29, 33, 35, 37, 39, 40 , 42, 43, 44, 45, 46, 47, 48, 49, 50, 87, 95, 113
<i>Cryptocarya australis</i>	14
<i>Cryptocarya aù-ùva</i>	125
<i>Cryptocarya berteriana</i>	3
<i>Cryptocarya botelhensis</i>	16, 18, 20, 21, 29, 33, 36, 51 , 52, 53, 54, 55, 56, 57, 58, 80
<i>Cryptocarya canelilla</i>	2, 125
<i>Cryptocarya caryoptera</i>	33
<i>Cryptocarya chinensis</i>	14
<i>Cryptocarya chingii</i>	20, 33
<i>Cryptocarya citriflora</i>	2, 5, 16, 17, 18, 20, 21, 29, 32, 33, 36, 59 , 60, 61, 62, 63, 64, 73
<i>Cryptocarya corrugata</i>	14
<i>Cryptocarya densiflora</i>	2, 14
<i>Cryptocarya dubia</i>	3, 125
<i>Cryptocarya emarginata</i>	3, 125
<i>Cryptocarya glaucescens</i>	2, 14, 34
<i>Cryptocarya granulata</i>	4, 5, 79
<i>Cryptocarya guianensis</i>	3, 4, 5, 6, 16, 20, 21, 26, 27, 33, 37, 65 , 66, 67, 68, 69
<i>Cryptocarya hintonii</i>	35
<i>Cryptocarya hirsuta</i>	125
<i>Cryptocarya humbertiana</i>	14
<i>Cryptocarya hypoleuca</i>	3, 31, 35, 59
<i>Cryptocarya jacarepaguensis</i>	4, 5, 125
<i>Cryptocarya kostermansiana</i>	35
<i>Cryptocarya lacrimans</i>	14

<i>Cryptocarya laevigata</i>	2, 3, 14, 20, 33, 34
<i>Cryptocarya laevis</i>	125
<i>Cryptocarya lauriflora</i>	3, 34
<i>Cryptocarya longistyla</i>	3, 6, 31, 35, 60, 101
<i>Cryptocarya louvellii</i>	14
<i>Cryptocarya luzoniensis</i>	3
<i>Cryptocarya mandioccana</i>	3, 4, 5, 6, 7, 9, 12, 13, 14, 15, 16, 17, 18, 19, 20, 21, 22, 23, 24, 25, 26, 32, 33, 35, 36, 52, 70 , 72, 73, 74, 75, 77, 78, 109, 122
<i>Cryptocarya mannii</i>	14
<i>Cryptocarya maroniensis</i>	65, 67
<i>Cryptocarya massoy</i>	3
<i>Cryptocarya meisnerana</i>	33
<i>Cryptocarya meisneriana</i>	33
<i>Cryptocarya meisneri</i>	14
<i>Cryptocarya micrantha</i>	3, 4, 5, 6, 16, 17, 19, 21, 29, 31, 33, 35, 37, 38, 51, 52, 79 , 80, 81, 82, 83, 84
<i>Cryptocarya minima</i>	2, 3, 5, 6, 31, 59
<i>Cryptocarya minutiflora</i>	3, 6, 8, 9, 35, 112, 113
<i>Cryptocarya monticola</i>	126
<i>Cryptocarya moschata</i>	2, 3, 4, 5, 6, 9, 14, 16, 18, 20, 21, 26, 29, 32, 33, 35, 37, 38, 39, 42, 43, 66, 67, 72, 80, 85 , 87, 88, 89, 90, 91, 92, 93, 94, 95, 113, 122
<i>Cryptocarya moschata</i> forma <i>angustifolia</i>	3, 85
<i>Cryptocarya mucronata</i>	126
<i>Cryptocarya nigropunctata</i>	4, 5, 65
<i>Cryptocarya nitens</i>	14
<i>Cryptocarya oblata</i>	20
<i>Cryptocarya obovata</i>	2
<i>Cryptocarya pachycarpa</i>	126
<i>Cryptocarya pauciflora</i>	34
<i>Cryptocarya percoriacea</i>	14
<i>Cryptocarya perrieri</i>	14
<i>Cryptocarya pleurosperma</i>	20, 33
<i>Cryptocarya pretiosa</i>	126
<i>Cryptocarya pyriformis</i>	126
<i>Cryptocarya riedeliana</i>	4, 16, 19, 29, 33, 37, 38, 42, 72, 94 , 95, 96, 97, 98, 99, 100
<i>Cryptocarya riedelii</i>	3, 126
<i>Cryptocarya robusta</i>	126
<i>Cryptocarya saligna</i>	3, 4, 5, 6, 9, 16, 17, 18, 20, 21, 31, 32, 33, 35, 36, 37, 60, 101 , 103, 104, 105, 106, 107
<i>Cryptocarya schwackeana</i>	3, 6, 9, 31, 35, 79, 80
<i>Cryptocarya scintillans</i>	14
<i>Cryptocarya sellowiana</i>	16, 17, 29, 32, 35, 36, 108 , 109, 110, 111
<i>Cryptocarya subcorymbosa</i>	3, 5, 6, 8, 9, 16, 17, 19, 33, 35, 38, 112 , 113, 114, 115, 116, 117
<i>Cryptocarya trianthera</i>	14
<i>Cryptocarya triplinervis</i>	2
<i>Cryptocarya velloziana</i>	29, 32, 35, 118 , 119, 120
<i>Cryptocarya wiedensis</i>	16, 29, 32, 36, 121 , 122, 123, 124
<i>Cryptocarya wightiana</i>	23
<i>Cryptocarya zapoteoides</i>	35
<i>Cryptocarya micrantha</i>	33
Cryptocaryeae.....	15, 27, 31
D	
<i>Dahlgrenodendron</i>	31
<i>Dasyprocta agouti</i>	87
<i>Delomys dorsalis</i>	72
E	
<i>Endiandra</i>	8, 15, 17, 31
<i>Endiandra montana</i>	17
<i>Endlicheria</i>	17
<i>Endlicheria robusta</i>	126
<i>Enneanthera</i>	4
<i>Evodia</i>	34
<i>Evodia ravensara</i>	34
H	
<i>Hexanthera</i>	4
<i>Hexapora</i>	31
I	
<i>Icosandra</i>	3, 34
<i>Icosandra rufescens</i>	3, 34
L	
Lauraceae.....	1, 2, 5, 8, 15, 17, 27, 31
Lurales.....	1

<i>Laurus</i>	8, 23	<i>Pipile jacutinga</i>	72
<i>Laurus citrifolius</i>	59	<i>Potameia</i>	15, 31
<i>Litsea</i>	23	<i>Protesilaus protesilaus nigricornis</i> ...	42
M		<i>Prunus brachybotrya</i>	35
Magnoliales	1	<i>Pseudocryptocarya</i>	3, 34
Magnoliidae	1	<i>Pseudocryptocarya pauciflora</i>	3, 34
<i>Massoia</i>	3, 34	R	
<i>Massoia aromatica</i>	3, 34	<i>Ravensara</i>	2, 15, 22, 34
<i>Mocinnodaphne</i>	1	<i>Ravensara aromatica</i>	34
N		S	
<i>Nectandra</i>	87	<i>Salgada</i>	34
<i>Nectandra robusta</i>	85, 87	<i>Salgada lauriflora</i>	3, 34
<i>Nectomys squamipes</i>	72	<i>Salgada laurifolia</i>	3
<i>Neolitsea aciculata</i>	23	<i>Sassafras</i>	8, 23
O		<i>Sextonia</i>	1
<i>Oecomys aff. concolor</i>	72	<i>Syzygium aromaticum</i>	72
<i>Oecomys russatus</i>	72	T	
<i>Oligoryzomys nigripes</i>	72	<i>Triadodaphne</i>	15
<i>Oryzomys russatus</i>	72	<i>Triandra</i>	4
P		<i>Trinomys iheringi</i>	72
<i>Penelope obscura</i>	72	U	
<i>Persea</i>	8	<i>Umbellularia</i>	9
Piperales.....	1		

13.5. Plates

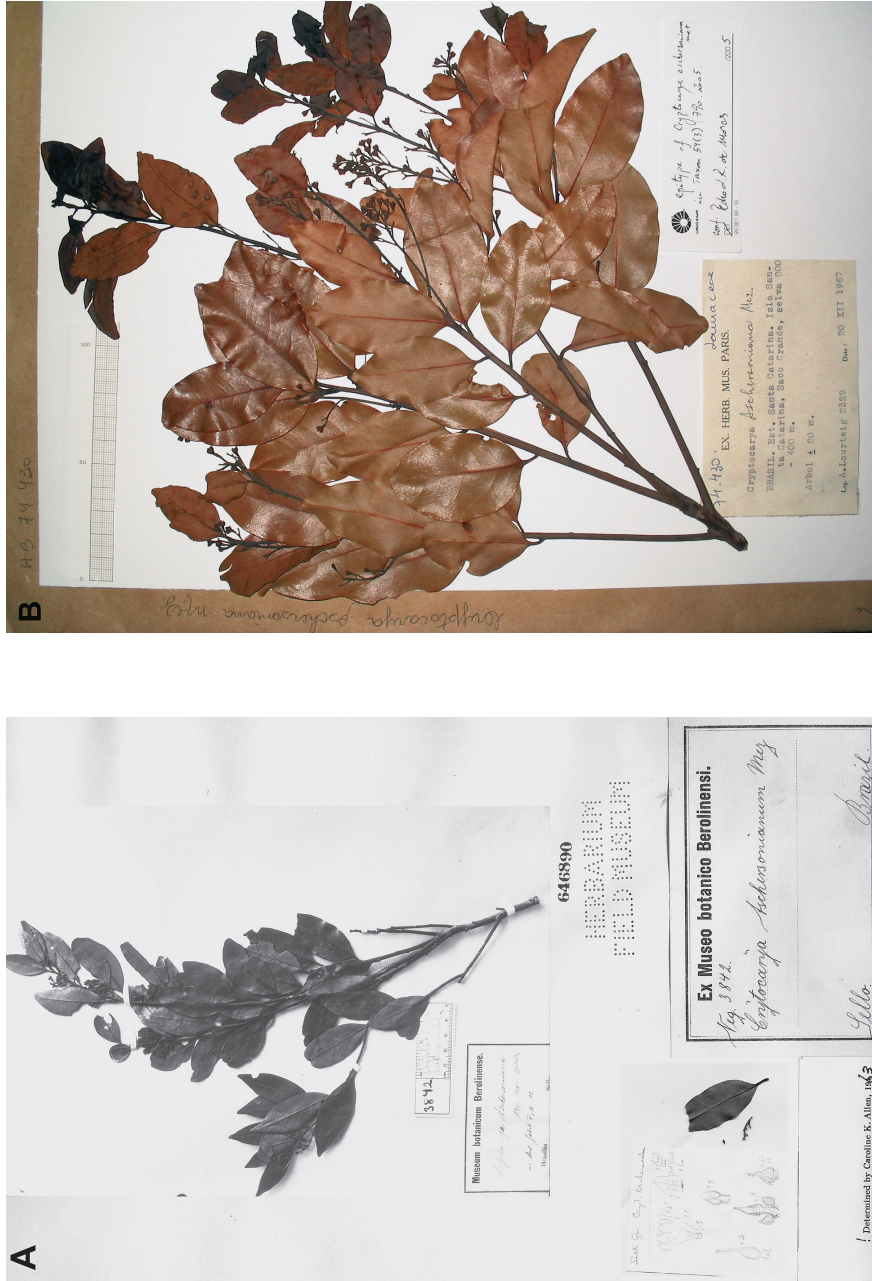


Plate I. A. Lectotype of *Cryptocarya aschersoniana* Mez: F. Sellow s.n. (F-646890), mounted with the Photo F Neg. No. 3842 and fragments from B†, © Field Museum of Natural History. B. Epitype of *C. aschersoniana* Mez: A. Lourteig 2329 (HB-74430) (Photograph by P.L.R. de Moraes).



Plate II. A. *Cryptocarya aschersoniana* Mez: F. Sellow 4495 (B-100088601), © Botanischer Garten und Botanisches Museum Berlin-Dahlem, FU Berlin. B. Holotype of *Cryptocarya botelhensis* P.L.R. de Moraes: P.L.R. de Moraes 2323 (UEC-141156) (Photograph by P.L.R. de Moraes).

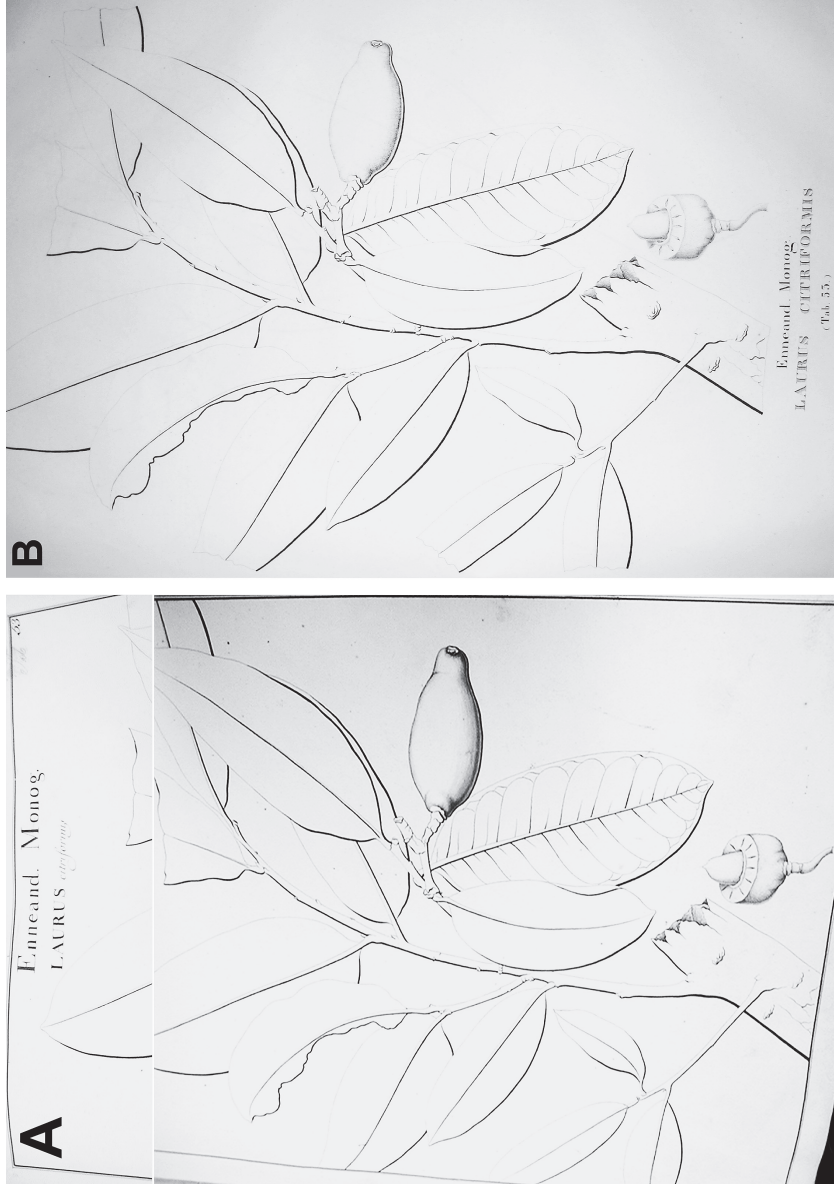


Plate III. A. Lectotype of *Laurus citrifolia* Vellozo: original plate on parchment of "Flora Fluminensis", in Manuscript Section of the Biblioteca Nacional. Cat. 11691; *Icones*. Cat. 1-17, 1, 9, Rio de Janeiro. © Biblioteca Nacional do Rio de Janeiro. B. Plate published in "Vellozo, J. M. da C. 1831 (1827). *Florae Fluminensis Icones*. Parisiis: ex off. Lithogr. Senefelder, curanti J. Knecht". (Photographs by P.L.R. de Moraes)



Plate IV. A. Holotype of *Aydedron floribundum* Meisner. L. Riedel s.n. (LE), © V.L. Komarov Botanical Institute – St. Petersburg.
 B. Lectotype of *Cryptocarya hypoleuca* Mez. T. Peckolt 166 (U), © Missouri Botanical Garden.



A



B

Plate V. A. Lectotype of *Cryptocarya guianensis* Meisner. M.E. Moricand 113 (G-DC), © Conservatoire et Jardin Botaniques de la Ville de Genève. B. Holotype of *Cryptocarya maroniensis* Benoist. G. Wachenheim 68 (P-00221227; F Neg. No. 35309), © Muséum National d'Histoire Naturelle (Herbier National de Paris)



Plate VI. A. Lectotype of *Cryptocarya nigropunctata* Vattimo-Gil. Collector unknown (RB-60616); only the fragment of inflorescence inside an envelope) (Photograph by P.L.R. de Moraes). **B.** Holotype of *Cryptocarya mandioccana* Meisner. L. Riedel s.n. (LE), © V.L. Komarov Botanical Institute – St. Petersburg.

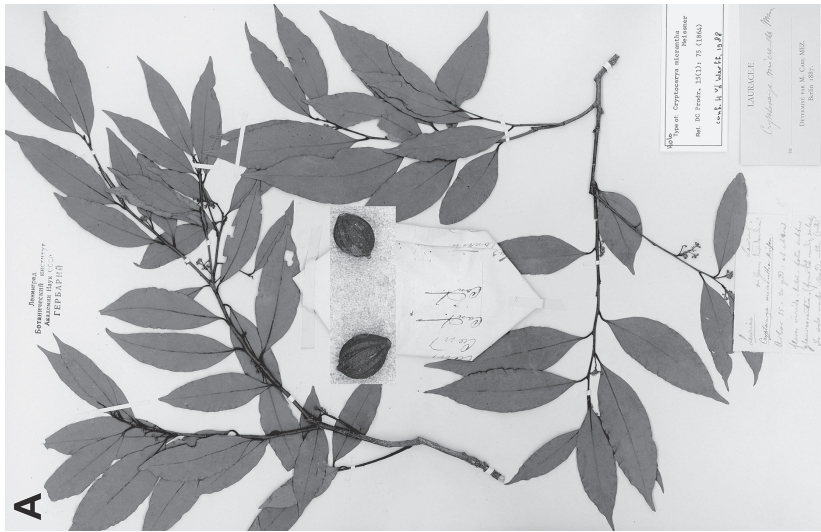


Plate VII. A. Holotype of *Cryptocarya micrantha* Meisner. L. Riedel s.n. (LE), © V.L. Komarov Botanical Institute – St. Petersburg.
 B. Holotype of *Cryptocarya granulata* Vattimo-Gil. J.G. Kuhlmann 39 (RB). (Photograph by P.L.R. de Moraes).

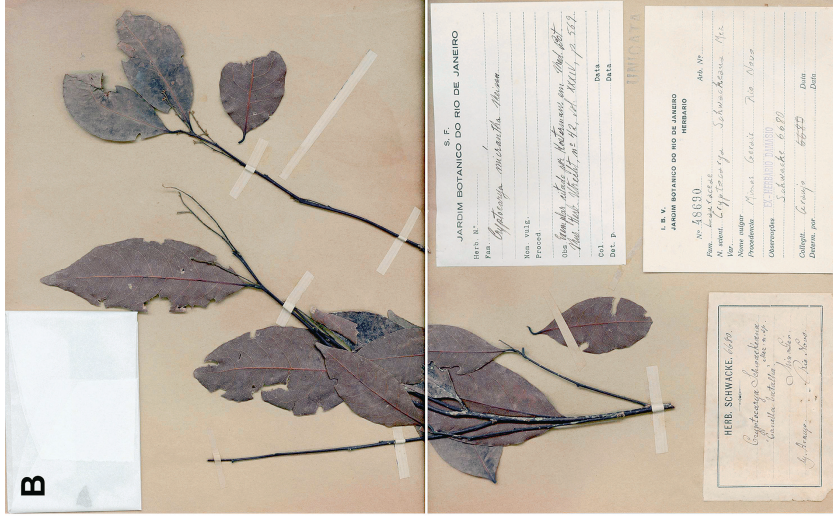
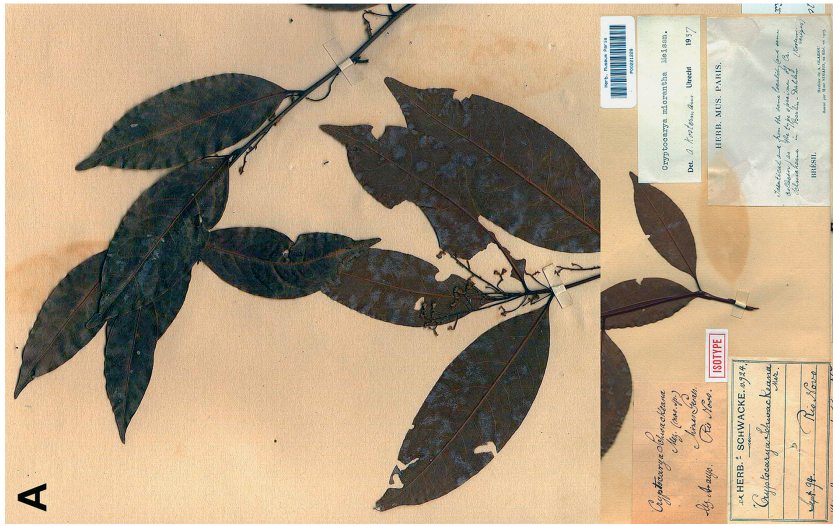


Plate VIII. A. Isotype of *Cryptocarya micrantha* Meisner. C.A.W. Schwacke 10924 (P-00221228), © Muséum National d'Histoire Naturelle (Herbier National de Paris). B. Lectotype of *Cryptocarya schwackeana* Mez. F.P.L. Araujo s.n. in Herb. Schwacke 6680 (RB). (Photograph by P.L.R. de Moraes).



Plate IX. A. Lectotype of *Cryptocarya moschata* Nees & Martius. F. Sellow s.n. (LE), © V.L. Komarov Botanical Institute – St. Petersburg.
 B. Lectotype of *Cryptocarya moschata* forma *angustifolia* Mez. J.F. Widgren 394 (BR),
 © Jardin Botanique National de Belgique.

A

Batalha (gr. nat.)

B 1095 b. Noz moschada do Brazil. *Nectandra officina*
Sylvestris sp.? *Culor* alta, trunco recto, cortice
 2-3 lin. castano epidermide-lacvigata
 cinerea & subrugosa; lacina absque rimis, ligno
 albo fibra dura, compacta, spiculis transversal
 minutis, gravi. Lami teretes epidermide cinereo-
 fusca rimis tenuibus a natis nasantibus, folia
 simpl. oblonga utrinque acuta, coriis. glabra, sub-
 stantia laminarum. Flores ignoro. Fructus in ra-
 cemis axillaribus 4-6. Nix ovata, utrinque acuta,
 cortice vestita, herbaceo tandem exarido sulcis lon-
 gitudinalibus suspensi. notata. Semen unicum
 glob. testa rugosa. Duplex (?) paulo elevata notata,
 albumen nullum. Cotyledones 2, hemisphaeric.
Cornulum Lonicum mucinum. marginale.
Culor et sapor fructus praecoxino multum val-
 de aconaticus, corticium remanentibus
 videtur, cuius usus valde recommendatus.
 In Martio Voyagem prope Brasiliae usum non
 ad Bras. quidem dicit. et. al. loc. servatone p. 244

Plate X. A. Lectotype of *Nectandra robusta* Löfgren & Everett ex E. Navairo de Andrade & O. Vecchi. (Photograph by P.L.R. de Moraes).
 B. Photocopy of Martius' observation about *Noz moschada do Brazil*, obs. 1095b from *Plantae in itinere brasiliensi annis 1817-1820 a Car. Frid. Phil. Martius descriptae*, vol. II (No. 761-1870), © Botanische Staatssammlung München (M).

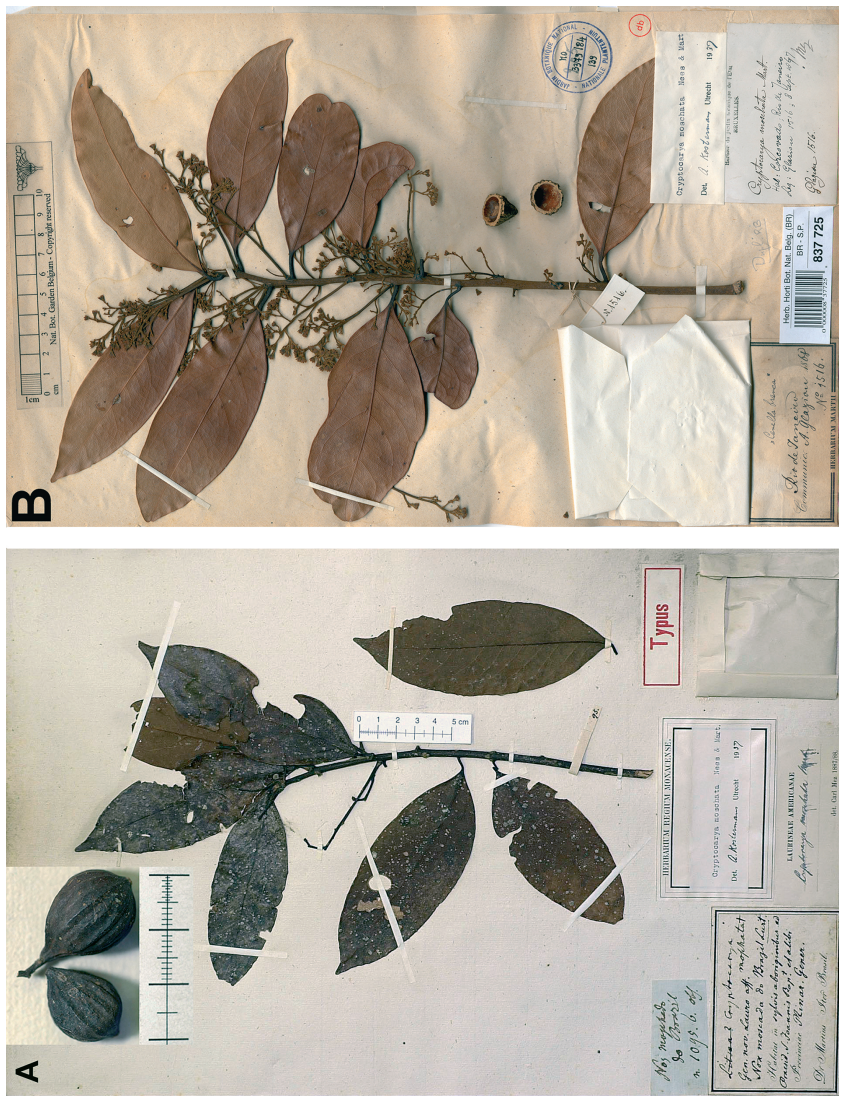


Plate XI. A. Syntype of *Cryptocarya moschata* Nees & Martius. C.F.P. von Martius s.n. (M), © Botanische Staatssammlung München (M).
 B. Holotype of *Cryptocarya riedeliana* P.L.R. de Moraes. A.F.M. Glaziou 1516 (BR), © Jardin Botanique National de Belgique.



Plate XII. A. Lectotype of *Cryptocarya saligna* Mez. A.F.M. Glaziou 14205 (C), © University of Copenhagen, Museum Botanicum Hauniense.
 B. Lectotype of *Cryptocarya longistyla* Mez. A.F.M. Glaziou 19801 (C; F Neg. No. 22066),
 © University of Copenhagen, Museum Botanicum Hauniense.

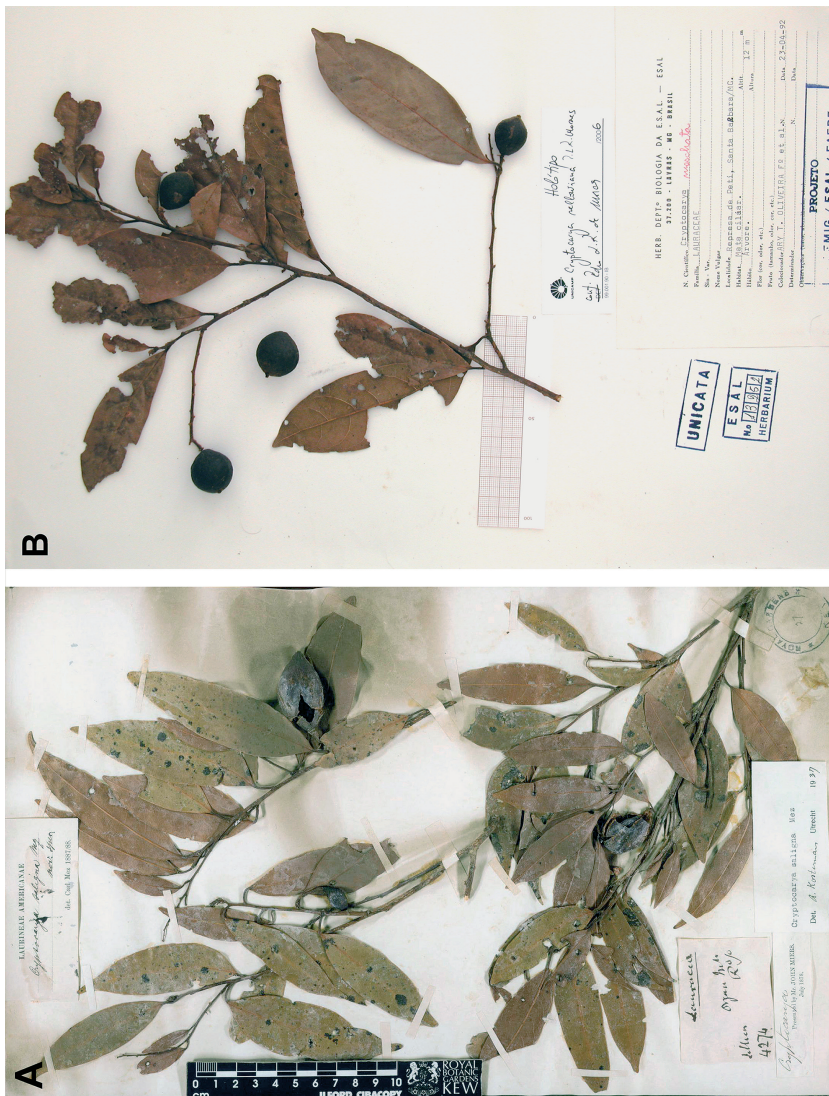
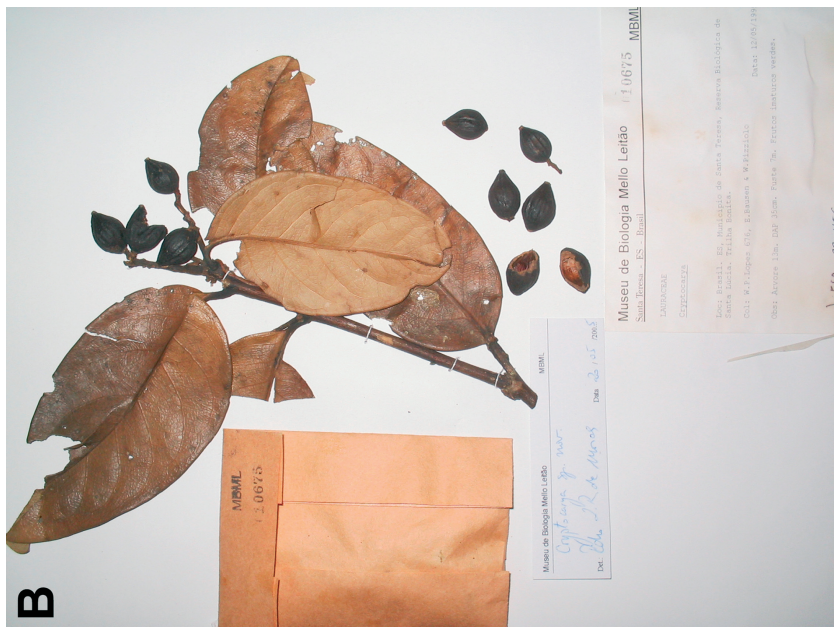


Plate XIII. A. Syntype of *Cryptocarya saligna* Mez. J. Miers 4274 (K), © Royal Botanic Gardens – Kew.
 B. Holotype of *Cryptocarya sellowiana* P.L.R. de Moraes. A.T. Oliveira Filho et al. s.n. (ESAL-13252).
 (Photograph by P.L.R. de Moraes).



Plate XIV. A. Isolectotype of *Cryptocarya minutiflora* Mez. A.F.M. Glaziou 18437 (BR), © Jardin Botanique National de Belgique.
 B. Lectotype of *Cryptocarya subcorymbosa* Mez. A.F.M. Glaziou 18436 (C),
 © University of Copenhagen, Museum Botanicum Hauniense.



**Plate XV. *Cryptocarya veloziana* P.L.R. de Moraes. A. Holotype: E. Bausen & M.F. dos Santos 28 (MBML).
 B. Paratype: W.P. Lopes et al. 676 (MBML). (Photographs by P.L.R. de Moraes).**

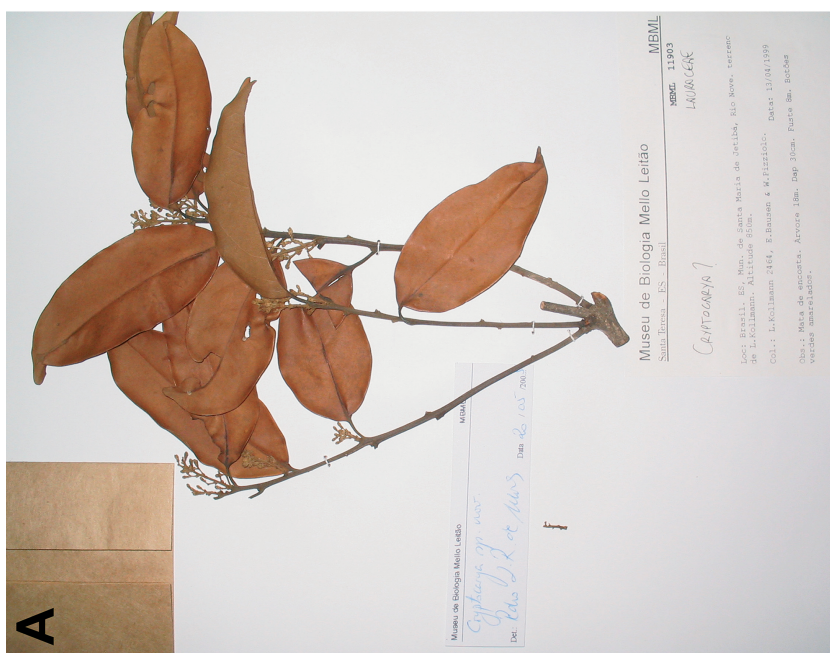
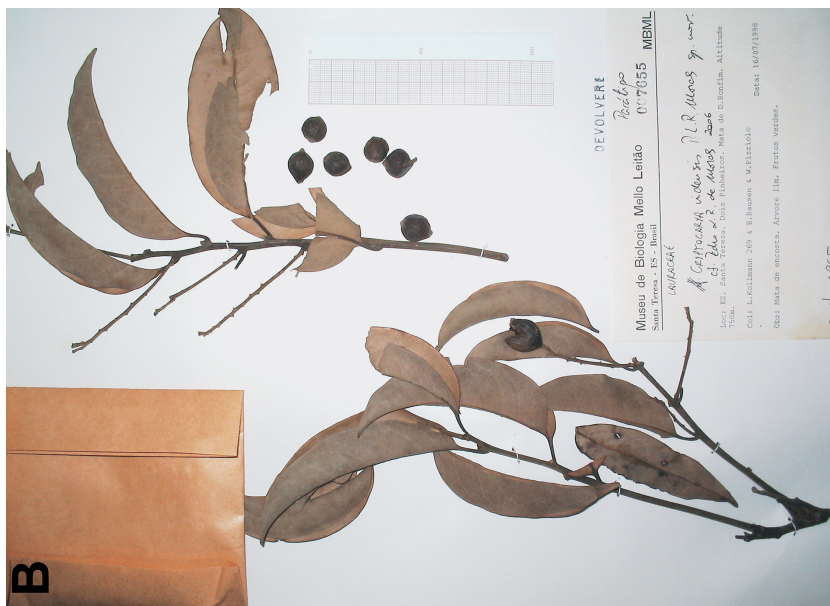


Plate XVI. *Cryptocarya wiedensii* P.L.R. de Moraes. A. Holotype: L. Kollmann et al. 2464 (MBML).
 B. Paratype: L. Kollmann et al. 269 (MBML). (Photographs by P.L.R. de Moraes).



Plate XVII. *Laurus mucronata* Poir. A. Holotype: Herb. Webbianum ex Herbario Desfontaines (F-W).
 B. Isotype: Herb. Webbianum ex Herb. Phil. Mercier (F-W). © Museo di Storia Naturale dell'Università degli Studi di Firenze – Herbarium Universitatis Florentinae.